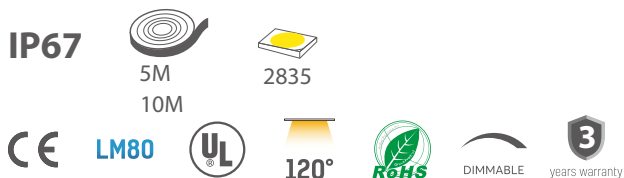


Top View Series 1010 5W 24V

- Extrusion process, lights soft and uniform;
- IP67 protection, easy-to install and convenient connection;

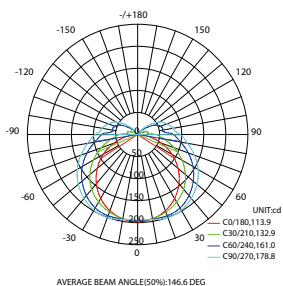


TECHNICAL DETAILS

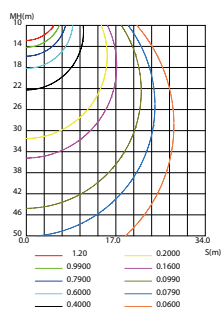
Power	5W/M
Voltage	DC24V
CRI	90
Led Qty	180LEDs/M
Length/Reel	5M - 10M
Working Temperature	-25~60°C
Storage Temperature	-30~80°C
Voltage Range	23 ~25V dc
Reverse Voltage	25V dc

LIGHT DISTRIBUTION

LUMINOUS INTENSITY DISTRIBUTION DIAGRAM



C0 PLANE ISOLUX DIAGRAM (UNIT:lx)

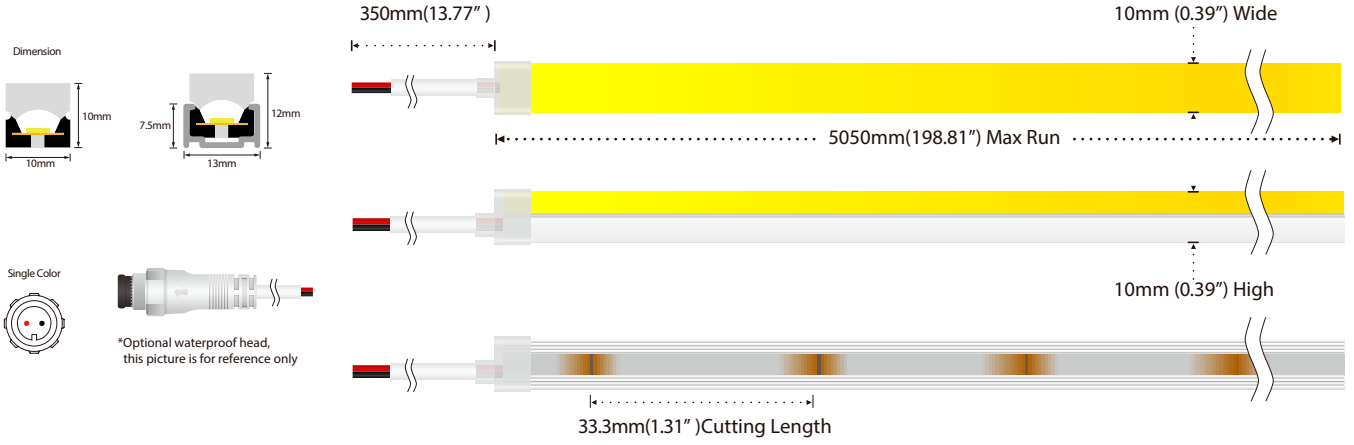


LUMENS PER METER

Color Temperature

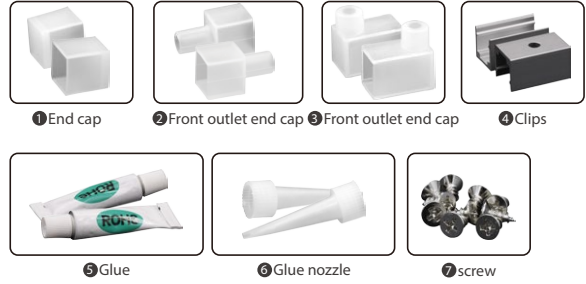
2700K	1000lm
3000K	1030lm
4000K	1060lm
6000K	1060lm

DIMENSION



ACCESSORIES SPECIFICATION

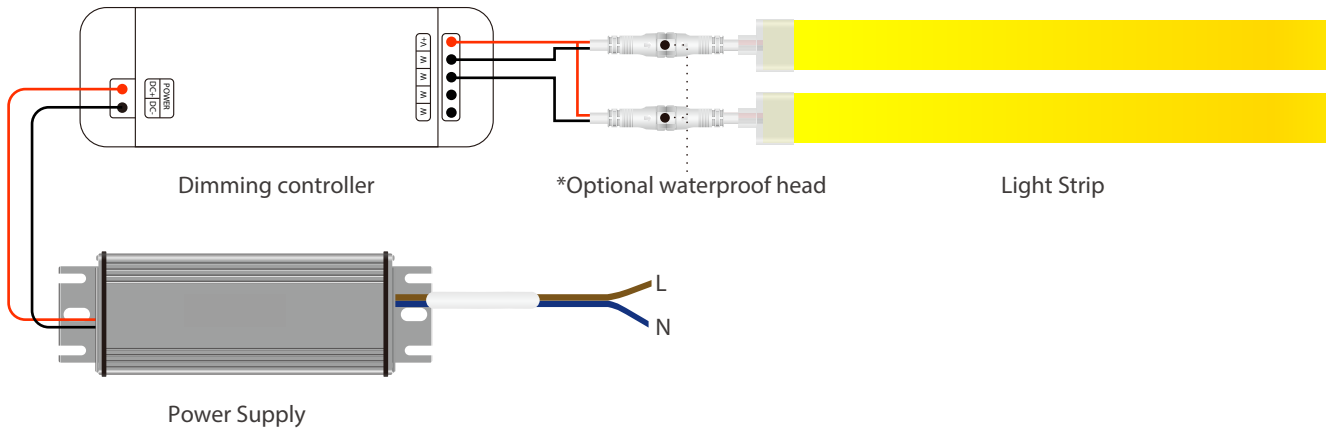
Name	Quantity	Note
① End cap	4pc	
② Front outlet end cap	2pc	
③ Front outlet end cap	-	*Optional
④ Clips	10pc	
⑤ Glue	2pc	
⑥ glue nozzle	2pc	
⑦ screw	10pc	



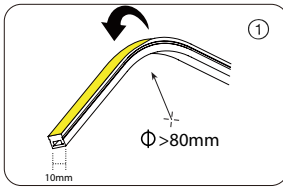
ALUMINUM PROFILE LIST

Product NO.	Section diagram	install
10x10mm		
10x10mm		

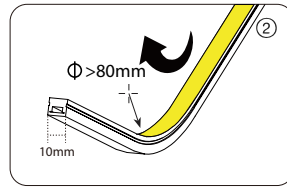
POWER CONNECTION DIAGRAM



Attention

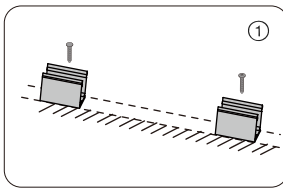


1. Top bending Series
Correct bending way

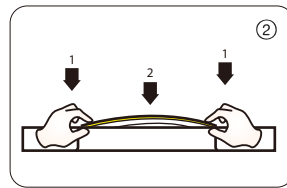


2. Top bending Series
Correct bending way

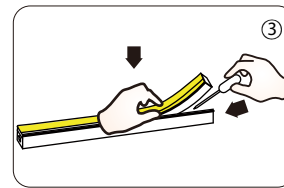
Installation



1. Installation of clip
Fix the clips and aluminum profile via the screws
 ⚠ Suggestion: 2pcs clips per meter.

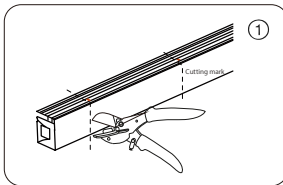


2. Installation of Neon
Simultaneously install the neon from both ends

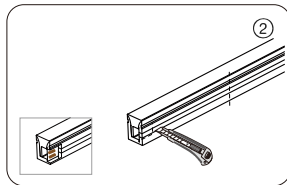


3. Installation of Neon
Should use tools to assist when remove the neon

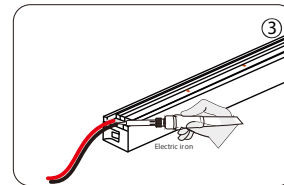
Cutting/Soldering/Intall end cap



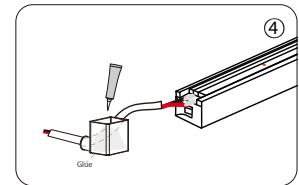
1. Cut the neon to be required length
 ⚠ The minimum cutting unit is based on the cutting mark.



2. Cut the side of neon, expose the soldering pad



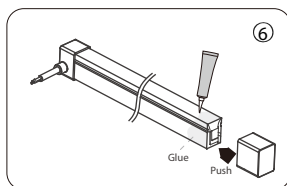
3. Solder the cable onto the PCB



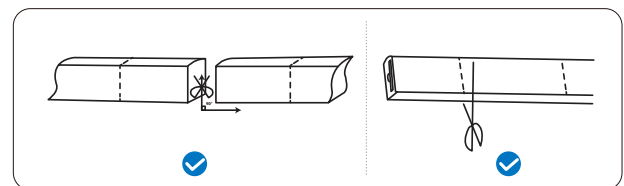
4. Put the wire into and inject glue into the end cap
 ⚠ The amount of glue is about 1/3-1/2 of end cap



5. Push the end cap to wrap end of neon
 ⚠ After the glue is injected, the neon needs to be laid flat for 2 hours to before other process.



6. Apply gel around the tail of neon and install the end cap
 ⚠ After the glue is injected, the neon needs to be laid flat for 2 hours to before project process. Glue will complete dry after 24hours.



PACKING

Box dimension(mm)	Carton dimension(mm)	Electrostatic size(mm)	Reel size(mm)	outer box(bags/carton)
330×320×320	-	400×380	305×100×12	15
Net weight (kg)	Each box net(kg)	Gross weight of each box(kg)		Bag quantity(bags/carton)
0.82	12.3	12.9		-

